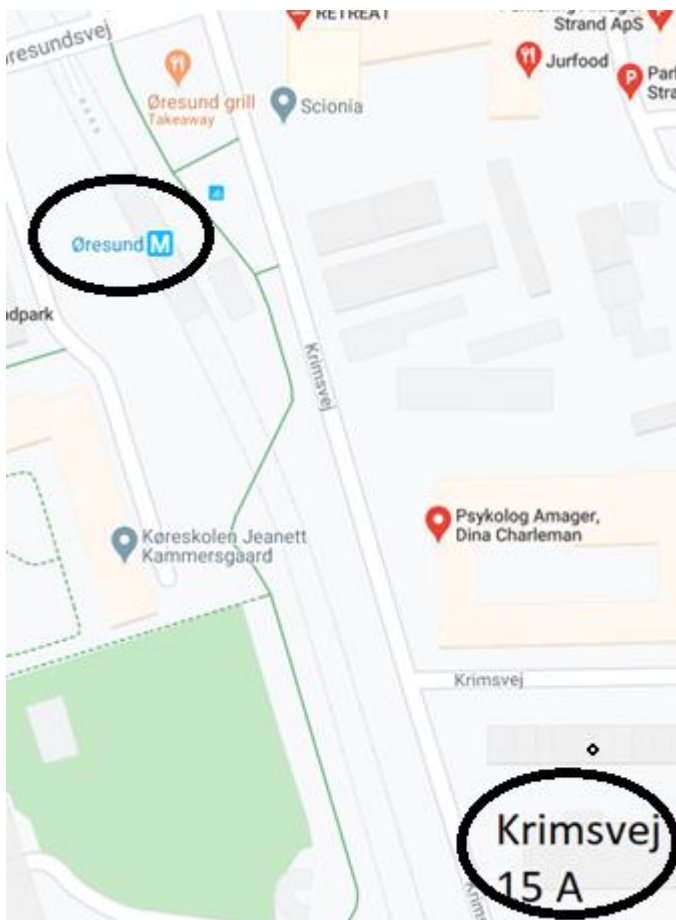


Here is some useful info:

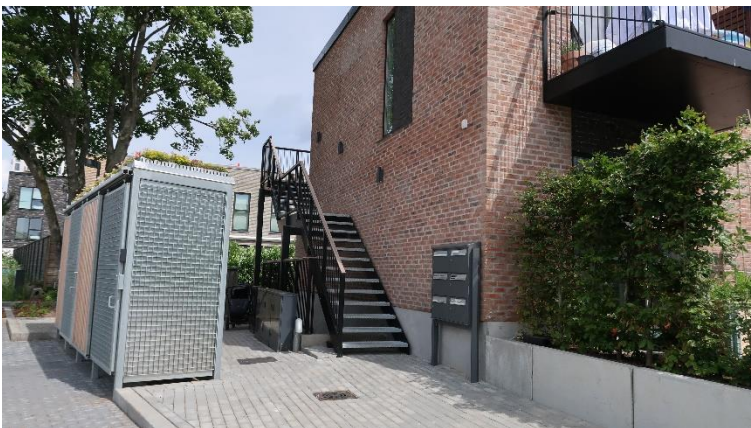
There are good opportunities to park the car on Krimsvej itself, and it is free and without time limit. We do it ourselves, and so far we have not had problems with injuries etc. on the car. There are seats available as many drive to and from. The pitches are also used by Copenhageners who go to the beach.



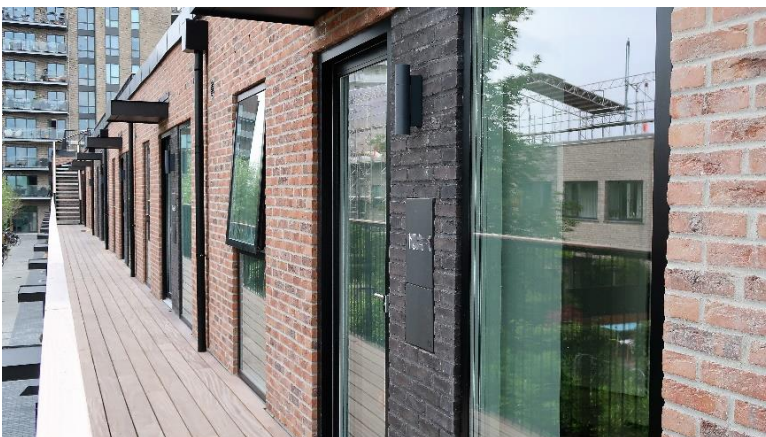
This is what Krimsvej 15A looks like - seen from the road:



Go up the stairs.



The apartment is the first on the right hand.



The key is in a key box on the right side of the door - bottom:



You will be given the code separately. Find the four digits and then press the button on the bottom left.

When you leave the apartment again, put the key in the box and set the numbers randomly.

Pull up the handle, when you lock up the door. The same when you lock the door.



WiFi

You will find WiFi as follows:

WiFi Modem: 5323

Password: 68bh8e249d

The modem is in the engineering cabinet on the left - in the small room.

TV:

First: Then use the second remote control. Tap source at the top right. Select HDMI



Then turn on this box and choose STOFA. Use this remote control afterwards to find programs.



The sofa-bed

The sofa bed in the living room is made for the night by pulling it out from the wall. The back is zipped down on both sides and two legs can be pulled forward.



Laundry

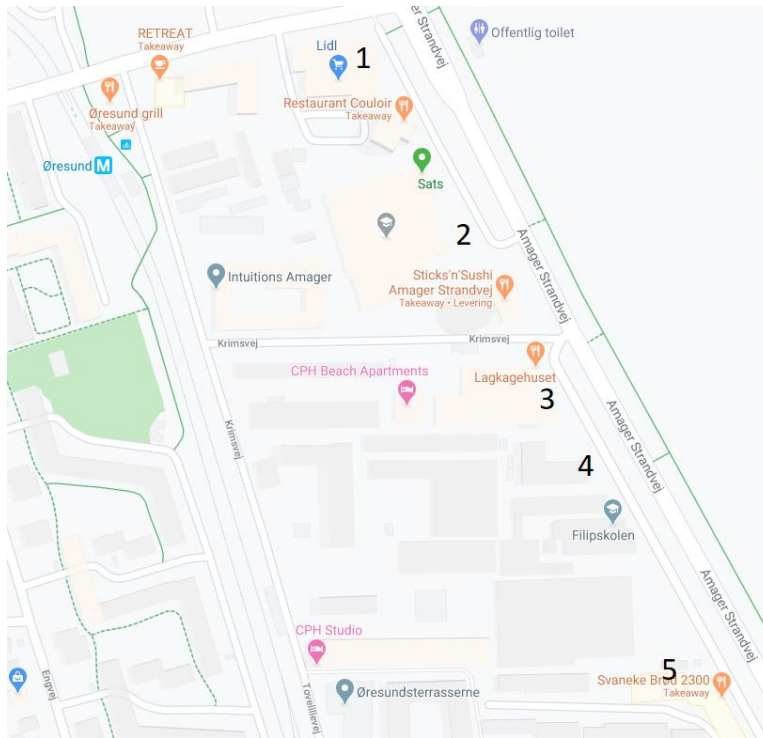
Washer and dryer – in one machine: There is liquid soap in the lower drawer. There is an instruction book on the table.

The kitchen:

You are welcome to use what is in the kitchen cabinets and in the fridge.

Shopping

You will find the nearest shopping opportunities here:



1. Lidl, supermarket, open 8-22 every day
2. Rema 1000 - Norwegian supermarket chain open 7-22 every day
3. Lagkagehuset, to-go coffee, etc. open 7-18 every day
4. Le Le Vietnamese restaurant, good takeaway open 11-21 every day
5. Svaneke Brød, good baker, open Friday 7-18, Sat-Sun 7-16

Trash

In front of the house is a small building for rubbish - remember to sort the rubbish. Use the key to the front door. On the other side of the small road - opposite the terrace - can cardboard, plastic, etc. delivered. The code is 2300 #.

The balcony

Feel free to use the yellow stops to prevent the patio door from slamming when pulled through.

Please, use them consistently.



Keep in mind that the neighbors are permanent residents and may have to go to work the next day. It will therefore be nice to have a little more subdued speech on the terrace after 11 pm.

The roof-terrace

You are welcome on the roof terrace which is for all residents of the property. Please, clean up after you and remove rubbish as we do not have a caretaker. There is no supervision of the terrace - it is about trust

